

# MEAN OL' GRAMPS

## INSTALLATION AND OPERATING INSTRUCTIONS

KEEP ALL PLASTIC AND WIRE PARTS AWAY FROM CHILDREN

1. Insert 4 brand new Alkaline AA batteries into the battery compartment located on the MODULE, or plug your 6V 2A DC Adapter into the DC Adapter Jack located on the module.  
*Hint: You can access the module through the opening on the back of the clothing.*
2. Using metal wire loop on back of shoulders, hang Gramps on door hanger or other hanging device and display where desired.
3. Bend wire arms to be flush against the wall as shown in photo below.
4. Turn switch to the ON position to operate in Sound or Motion Activation Mode. Make a loud sound (clap) or move in front of the item to activate.

*Note: Mean Ol' Gramps will function with 1.5 minute breaks between cycles - or, clap during the 1.5 minute break to instantly activate Mean Ol' Gramps again.*

### Optional Footpad Setup

Follow Steps 1 through 3 on initial installation first.

1. Connect wire from the optional footpad to the jack labeled FOOTPAD located on the base.
2. Place the switch on the base into the 'FOOTPAD' position to enable FOOTPAD activation.
3. Step on FOOTPAD to activate the scary sequence.

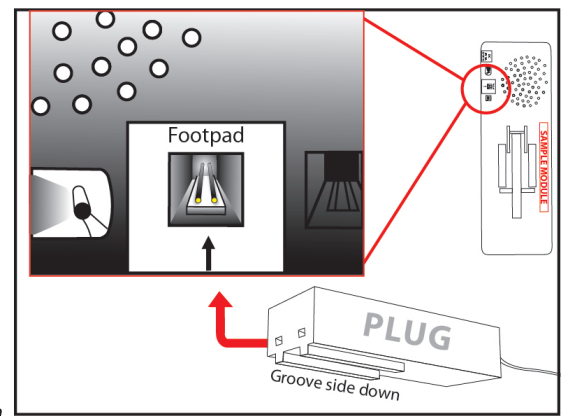
#### NOTE:

When plugging in, make sure pins line up properly with holes on plug. Align plug, groove side down, with the notch.

#### CAUTION!

Not aligning the plug to jack properly may cause permanent damage to Foot Pad jack of your item. Do not use excessive force when inserting plug.

\*Footpads are sold separately and can be purchased in Spirit Halloween stores or online: [www.spirithalloween.com](http://www.spirithalloween.com)



#### WARNING

Do not turn on the item until you have completely finished assembly. Stay clear of the item while operating.

For best overall performance, we recommend you operate your item in a sheltered outdoor area. We also recommend you bring your item indoors during adverse weather conditions (extreme cold, strong winds and/or rain). This item operates best outdoors in temperatures above freezing (32°F). We recommend using heavy-duty, alkaline batteries for best operating performance.

This item is not a toy. For decoration only. Small parts, choking hazard. This product is intended for use by persons 15 years of age and older. NOT intended for use by children 14 years of age and younger.



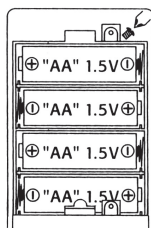
#### BATTERY INSTRUCTIONS & CAUTIONS

Use only batteries recommended. Remove batteries when not in use. Do NOT use rechargeable batteries. Be sure to insert the batteries with the correct polarity +/-.

Never mix different types of batteries; old and new, carbon-zinc, alkaline, nickel-cadmium.

ADULT SUPERVISION IS RECOMMENDED WHEN CHANGING BATTERIES.

\*This product is shipped with batteries for in-store demonstration ONLY. We recommend the consumer replace any demo batteries with fresh cells to ensure proper operation and enjoyment.



#### BATTERIES REQUIRED



Surface Washable Only.

ALL NEW MATERIALS: PLASTIC, POLYESTER POLYESTER FIBER

Battery Powered: 4 'AA' Alkaline Batteries (not included)  
Optional DC Adapter Ready (6V 2A)  
(DC Adapter Sold Separately)